

SKATEPLATE® Worm drive fits the following Saw Models:
EL SKATEPLATE® Worm drive se ajusta a los siguientes modelos de sierra:
SKATEPLATE® Worm drive (entraînement à vis sans fin)
s'adapte aux modèles de scie suivants:

SAW BRAND MARCA DE SIERRA MARQUE DE LA SCIE	SAW MODEL MODELO DE SIERRA MODÈLE DE LA SCIE
BOSCH	CS41 MAG, 1677M
DEWALT	DWS535, DWS535T, DWS535B*
HITACHI	C7WDM*
MAKITA	5377MG, 5477NB*
RIDGID	R3210-1, R3210-2, R3210-4
SKIL	SHD77, SHD77M, SHD77M-02, SHD77M-72, SHD77M-73, SHF77-72, SHF77-73, SPT77W-01, SPT77W-22, SPT77WM-22, SPT77WML-01, SPT77WML-22, MAG77LT, MAG77LT-72, MAG77-75

* REQUIRES PROVIDED SPACER
* UTILISER L'ENTRETOISE FOURNIE

* REQUIERE EL USO DEL SEPARADOR
SUMINISTRADO CON EL PRODUCTO

VISIT WWW.SKATEPLATE.COM FOR THE LATEST SAW FITMENT GUIDELINES
 VISITE WWW.SKATEPLATE.COM PARA CONOCER LAS ÚLTIMAS ESPECIFICACIONES DE MONTAJE DE LA SIERRA
 ALLEZ SUR WWW.SKATEPLATE.COM POUR EN APPRENDRE PLUS SUR LES DERNIÈRES DIRECTIVES CONCERNANT LE MONTAGE SUR LA SCIE

WARNING

Read and understand all instructions. Failure to follow all instructions listed below may result in electric shock or serious personal injury.

SAVE THESE INSTRUCTIONS

FOLLOW INSTRUCTIONS FOR YOUR SAW

Be sure to follow all of the safety instructions for your saw. Wear eye protection and use all recommended protective equipment. Unplug Your Saw Before Installing or Adjusting the SKATEPLATE®. Disconnect the plug from the power source before installing or making any adjustments to the SKATEPLATE®. These preventive safety measures reduce the risk of starting the saw accidentally. Remove all adjusting keys or wrenches before turning the saw on.

SECURE THE WORK PLACE

Use clamps or other practical way to secure and support the work piece to a stable platform. Holding the work by hand or against your body is unstable and may lead to loss of control. NEVER hold piece being cut in your hands or across your leg. It is important to support the work properly to minimize body exposure, blade binding, or loss of control. Do not force the saw.

SKATEPLATE® Use and Care

Check for misalignment or binding of moving parts, breakage of parts, and any other condition that may affect operation of the SKATEPLATE®. If damaged, replace or repair before using. Certain cleaning agents such as gasoline, carbon tetrachloride, ammonia, etc. may damage plastic parts. Never clamp or tie the lower guard into the open position. Circular saws are not designed or intended to be used as table saws.

KICKBACK

KICKBACK may occur with the SKATEPLATE®. NEVER place your hand behind the saw blade since KICKBACK could cause the saw to jump backwards over your hand. Keep your body positioned to either side of the saw blade, but not in line with the saw blade. Follow all of the instructions for your saw to prevent KICKBACK.

SKATEPLATE® Hardware

- (2) Spacers
- (2) 5/8" Locking Bolts
- (2) 1 1/4" Locking Bolts
- (1) Locking Slide
- (1) Universal Locking Slide
- (2) Foot Pads

SKATEGUIDE® Hardware

- (1) Handle Shoulder Bolt
- (1) Cap Screw

LIMITED WARRANTY OF CIRCSAW TECHNOLOGIES, LLC PRODUCTS

CircSaw Technologies LLC ("Seller") warrants to the original purchaser only, that all SKATEPLATE® and SKATEGUIDE® products SKATEPLATE, SKATEGUIDE, SKATEGUIDE-ZILLA AND SKATEPLATE H2O will be free from defects in material or workmanship for a period of 90 days from date of purchase.

SELLER'S SOLE OBLIGATION AND YOUR EXCLUSIVE REMEDY under this Limited Warranty and, to the extent permitted by law, any warranty or condition implied by law, shall be the repair or replacement of parts, without charge, which are defective in material or workmanship and which have not been misused, carelessly handled, altered or repaired by persons other than Seller or its Factory Service Center. To make a claim under this Limited Warranty, you must (a) contact CircSaw Technologies LLC at www.skateplate.com to obtain a Warranty Return Authorization, and (b) return the complete product, shipping prepaid, to the CircSaw Technologies LLC Factory Service Center specified.

SELLER DISCLAIMS LIABILITY FOR ANY IMPLIED WARRANTIES, INCLUDING IMPLIED WARRANTIES OF "MERCHANTABILITY" AND "FITNESS" FOR A PARTICULAR PURPOSE, AFTER THE 90-DAY TERM OF THIS WARRANTY. SOME STATES IN THE U.S.A. AND SOME CANADIAN PROVINCES DO NOT ALLOW THE EXCLUSION OR LIMITATION OF INCIDENTAL OR CONSEQUENTIAL DAMAGES, SO THE ABOVE LIMITATION OR EXCLUSION MAY NOT APPLY TO YOU.

IN NO EVENT SHALL SELLER BE LIABLE FOR ANY INCIDENTAL OR CONSEQUENTIAL DAMAGES (INCLUDING BUT NOT LIMITED TO LIABILITY FOR INJURY OR LOSS OF PROFITS) ARISING FROM THE SALE OR USE OF THIS PRODUCT. #SOME STATES IN THE U.S.A. AND SOME CANADIAN PROVINCES DO NOT ALLOW THE EXCLUSION OR LIMITATION OF INCIDENTAL OR CONSEQUENTIAL DAMAGES, SO THE ABOVE LIMITATION OR EXCLUSION MAY NOT APPLY TO YOU.

THIS LIMITED WARRANTY GIVES YOU SPECIFIC LEGAL RIGHTS, AND YOU MAY ALSO HAVE OTHER RIGHTS, WHICH VARY FROM STATE TO STATE IN THE U.S.A, PROVINCE TO PROVINCE IN CANADA AND FROM COUNTRY TO COUNTRY.

THIS LIMITED WARRANTY APPLIES ONLY TO PRODUCTS SOLD WITHIN THE UNITED STATES OF AMERICA, CANADA AND THE COMMONWEALTH OF PUERTO RICO.

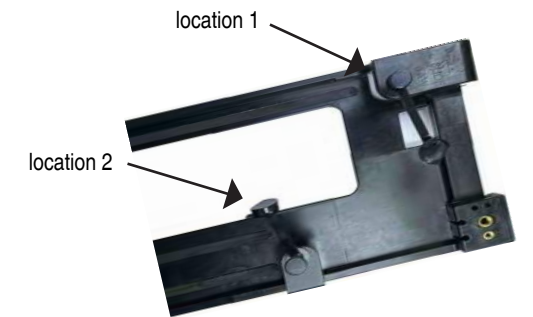
SKATEPLATE ASSEMBLY

STEP 1

Loosely install the 1 1/4" locking bolts and footpads into the brass fitting on the left front of SKATEPLATE at Location 1 and into the bracket on the right side of SKATEPLATE at Location 2. Do not fully tighten the locking bolts so that there is room for inserting your saw into SKATEPLATE during installation.

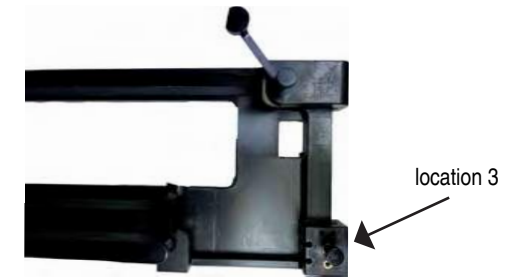
Note:

Not all saw base plates require use of the foot pad to firmly secure your saw base plate into the SKATEPLATE.



STEP 2

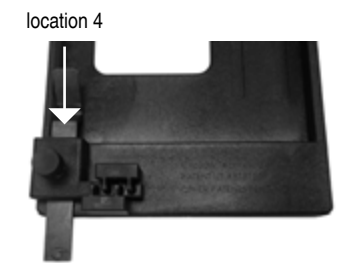
Loosely install the 5/8" locking bolt into the brass fitting on the right front of SKATEPLATE at Location 3. Do not fully tighten the locking bolt so that there is room for inserting the SKATEGUIDE during installation.



STEP 3

Insert the locking slide into the rear opening on the back of the SkatePlate at Location 4. Some pressure will be required to initially insert the locking slide into position.

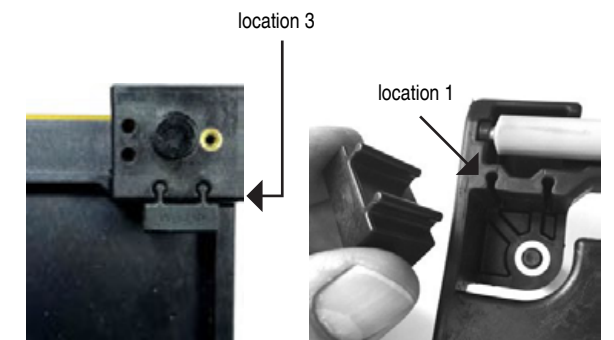
Insert the 5/8" locking bolt into the brass fitting above the locking slide at Location 4.



STEP 4 - NYLON SPACERS

Some saw models have factory base plates that are shorter than others and the rear locking slide at Location 4 may not fully reach the back of the saw base plate when fully extended to firmly secure the saw in place. In those instances, insert the nylon spacers at Location 1 from the underside of SKATEPLATE and Location 3, to ensure that the locking slides firmly secure the back of your saw.

Check the Saw Compatibility Chart on these instructions to determine if the (2) nylon spacers are required for your saw model.



INSTALLATION

WARNING! ALWAYS UNPLUG YOUR POWER TOOL WHEN CHANGING SET UP!

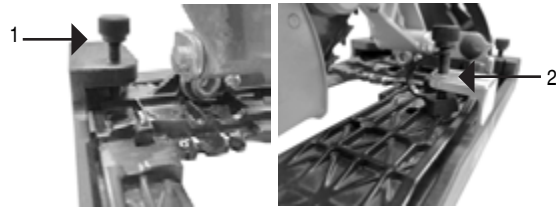
STEP 1

Lift the saw into the fully raised cut depth position and lock into place.



STEP 2

Extend the locking slide at Location 4 to its most open position. Slide your saw into the SKATEPLATE, front end first, and under the locking bolts at Location 1 and 2. Align the saw all the way to the front and to the left side of the SKATEPLATE for accurate aligned cuts. Firmly hand tighten the locking bolts at Locations 1 and 2.



STEP 3

Push the locking slide forward and firmly against the rear of the saw base plate and firmly tighten the locking bolt.

If the locking slide does not reach the back of your saw base plate, insert the nylon spacers mentioned previously.

UNIVERSAL LOCKING SLIDE: This slide is an optional accessory and is only intended to be used for the very few saw models that have a high saw base plate edge that prevents insertion of the standard locking slides into place.



Your SKATEPLATE Wormdrive is now ready for use!

ALWAYS check alignment before starting a cut!

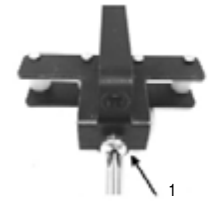
DO NOT OVER-TIGHTEN LOCKING BOLTS, AS DOING SO CAN CAUSE THE COMPONENTS TO FAIL!



SKATEGUIDE ASSEMBLY

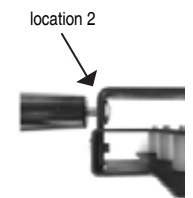
STEP 1

Insert the angled end of the ruler into the rectangular slot on the roller head and firmly tighten the cap screw as indicated in Figure 1.



STEP 2

Insert the handle shoulder bolt through the angled end of the ruler and attach the handle to the shoulder bolt. Firmly tighten the handle by rotating it by hand until it is snug.



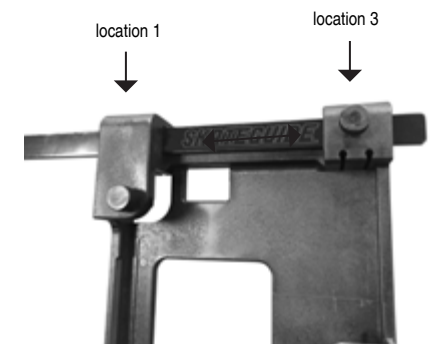
Your SKATEGUIDE is now ready to use!

USING YOUR SKATEGUIDE

Slide the end of the SKATEGUIDE ruler into the rectangular slots on the LEFT or RIGHT side of the front of your SKATEPLATE at Locations 1 and 3, as indicated. For stability and safety, ensure that the SKATEGUIDE ruler is at a minimum completely inserted into both slots at Locations 1 and 3.

Measure the width of your cut and tighten the locking bolt at Location 3 to secure the SKATEGUIDE in place. Periodically check the tightness of the locking screw after extended saw operation to ensure that the measured width has not been modified.

For wider cuts, the SKATEGUIDE can be inserted into the SKATEPLATE starting from the slot opposite the side of the saw blade.



SKATEGUIDE REVERSE CUTS

SKATEGUIDE can be used as a Reverse Guide by mounting the roller body in the opposite direction as shown on the image.

Reverse the roller head and install the cap screw. Do not install the handle. Store the handle and shoulder bolt in a safe location.



For any additional questions or to view instructional videos, please refer to our website: WWW.SKATEPLATE.COM